



PRODUCT: AUTOMATED CATWALKS

DATE: May 11, 2009

SUBJECT: PC3000 & PC4000 New Skate Options

SERIAL NUMBERS: All

DISCUSSION:

In certain circumstances when laying down pipe, it may be necessary to use the skate to control the travel of the pipe. If not done properly, this could cause the pipe to come off sideways and be free from the carrier and fall uncontrolled.

Proper operation of the catwalk at all times will prevent equipment damage and reduce risk of injury. Please refer to Section 5 of the Operating manual for detailed instructions.

RECOMMENDATION:

Canrig has developed a new skate and cage for the PowerCAT 3000 and 4000 series. The new skate is designed to reduce the risk of a tubular being ejected from the carrier in the event the skate is being used to tail back pipe. It has side arms that protrude past the front of the skate to prevent pipe from coming off sideways in the event of the skate pushing the pipe sideways. For tubulars up to 13-3/8" diameter, use the Assembly, Compact Skate, Reverse Vee Part Number 121300060.

A new skate cage has also been developed for running casing between 11-1/2" and 16-3/4". Assembly, 16-3/4" Skate Cage Part Number 121300074.

To purchase these components, please contact your Canrig Part Sales representative or your Field Service Coordinator.



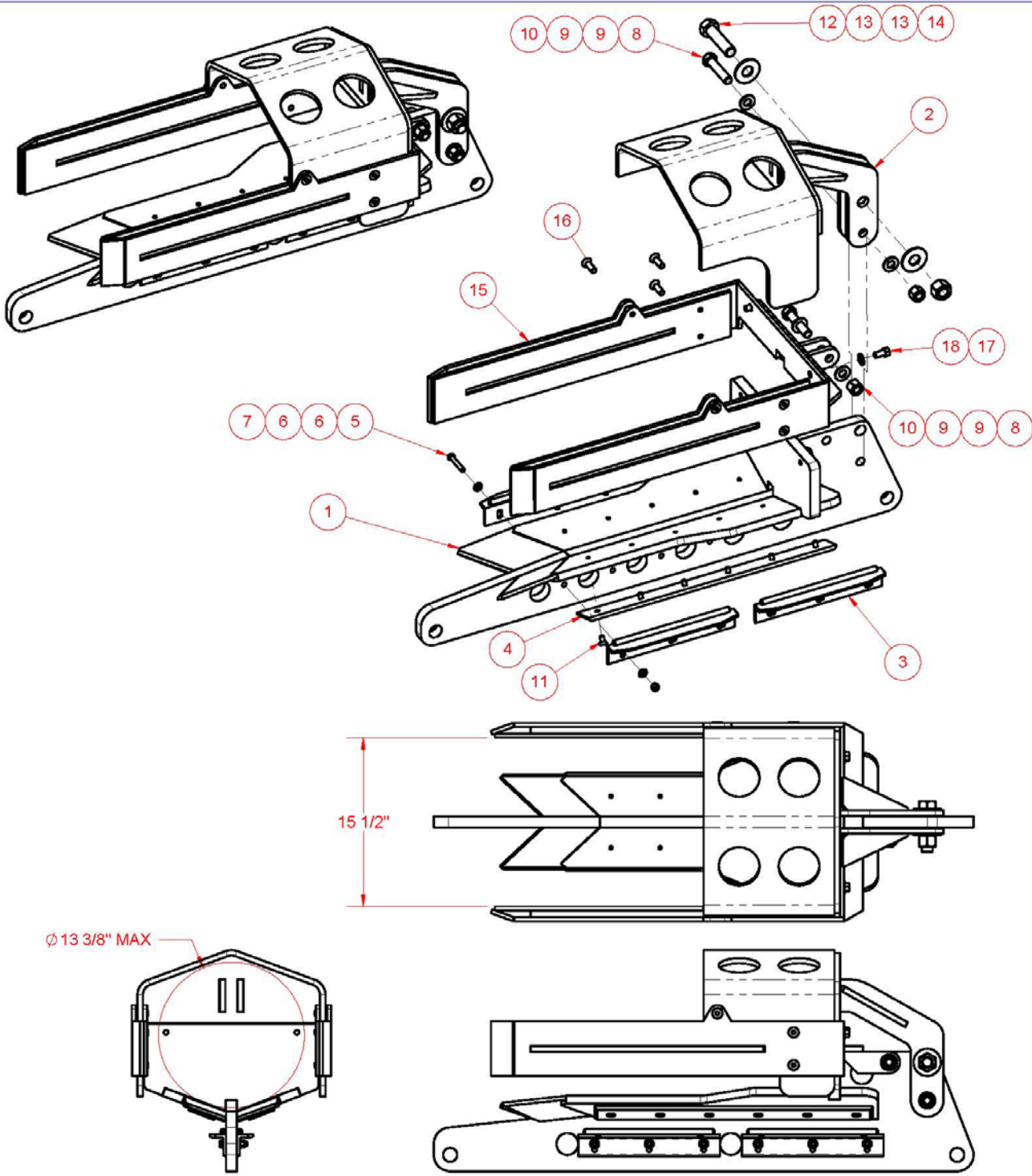
Engineering Bill of Material

Part: 121300060
Description: ASSY,COMPACT SKATE,REVERSE VEE

Eng ID: 0
Drawing ID: 121300060

Rev No: 01

Item	Qty	Units	Part ID	Eng ID	Description
01	1.00	EA	131300006		WELDMENT,SKATE BODY,REVERSE VEE
02	1.00	EA	131100155		SKATE CAGE
03	4.00	EA	131100257		SKATE RETAINER
04	2.00	EA	141500004		SKATE SLIDER PLASTIC
05	6.00	EA	HH-0375NF-0225-GR8		CAPSCR, HEX HD HVY 3/8-24UNF x 2.25
06	12.00	EA	FW-0375-A		WASHER, F, 3/8, PLAIN, TYPE A
07	6.00	EA	LN-0375NF-NL-GR8		LOCKNUT, 3/8-18UNF, NYLOCK, GR8
08	2.00	EA	HH-0750NC-0350-GR8		CAPSCR, HEX HD, 3/4-10UNC x 3.50, GR8
09	4.00	EA	FW-0750-A		WASHER, F, 3/4, PLAIN, TYPE A
10	2.00	EA	LN-0750NC-NL-GR8		LOCKNUT, 3/4-10UNC, NYLOCK, GR8
11	12.00	EA	FH-0375NC-0075		CAPSCREW, FLAT HD, 3/8UNC x 0.75
12	1.00	EA	HH-1000NC-0400-GR8		CAPSCR, HEX HD, 1-8UNC x 4.00, GR8
13	2.00	EA	FW-1000-A		WASHER, F, 1, PLAIN, TYPE A
14	1.00	EA	LN-1000NC-NL-GR8		LOCKNUT, 1-8UNC, NYLOCK, GR8
15	1.00	EA	131300007		GUIDE,SKATE TUBE LEAD IN
16	6.00	EA	FH-0500NC-0150		CAPSCREW, FLAT HD, 1/2UNC x 1.50
17	2.00	EA	FW-0500-A		WASHER, F, 1/2, PLAIN, TYPE A
18	2.00	EA	HH-0500NC-0100-GR8		CAPSCR, HEX HD, 1/2-13UNC x 1.00, GR8



REV.	DESCRIPTION	DATE
01	ITEM 15 CHANGED	11-May-2009
00	RFM	3/17/2009

© 2009 CANRIG DRILLING TECHNOLOGY CANADA LIMITED
ALL RIGHTS RESERVED

THE DRAWINGS, INFORMATION AND SUBJECT MATTER HEREOF ARE THE CONFIDENTIAL, SOLE AND EXCLUSIVE PROPERTY OF CANRIG DRILLING TECHNOLOGY CANADA LTD. AND ARE NOT TO BE COPIED, REPRODUCED, OR USED IN ANY MANNER FOR ANY PURPOSE WHATSOEVER WITHOUT WRITTEN CONSENT OR DIRECTION.

CANRIG
Drilling Technology Ltd.
7475 51 Street SE
Calgary, Alberta, Canada, T2C 4L6
Website: www.canrig.com
Bus. (403) 237-6400 Fax. (403) 233-2667

TITLE:					
ASSEM, COMPACT SKATE, REVERSE VEE					
DRAWN BY:	DATE:	DRAWING NO.:	SHEET:	REV.:	
BK	16-Mar-2009	121300060	1 OF 1	01	



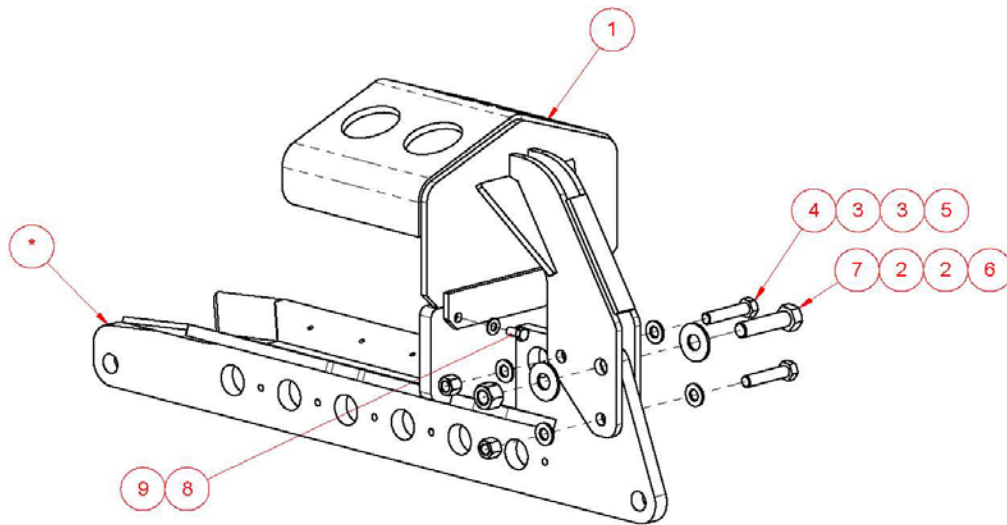
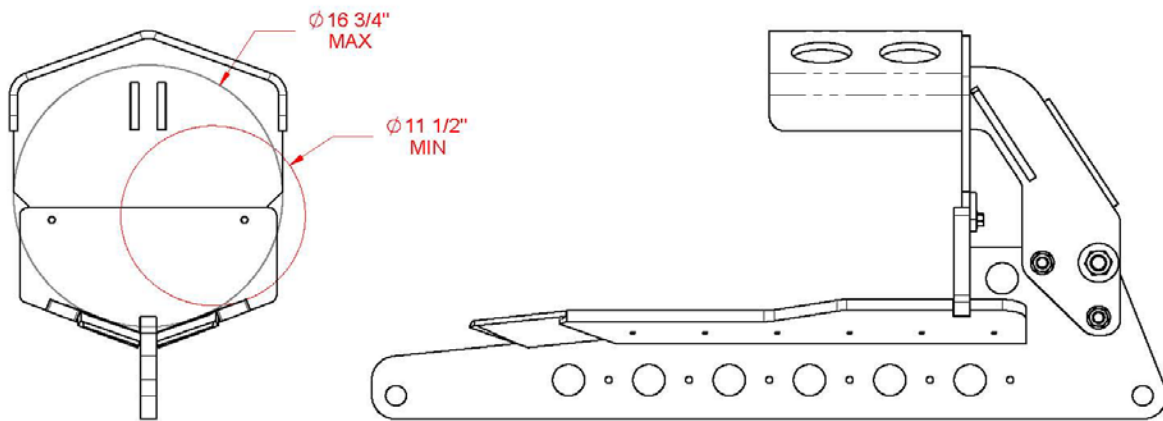
Engineering Bill of Material

Part: 121300074
Description: ASSY,16-3/4IN SKATE CAGE

Eng ID: 0
Drawing ID: 121300074

Rev No: 0

Item	Qty	Units	Part ID	Eng ID	Description
01	1.00	EA	131300008		WELDMENT,16-3/4IN SKATE CAGE
02	2.00	EA	FW-1000-A		WASHER, F, 1, PLAIN, TYPE A
03	4.00	EA	FW-0750-A		WASHER, F, 3/4, PLAIN, TYPE A
04	2.00	EA	HH-0750NC-0350-GR8		CAPSCR, HEX HD, 3/4-10UNC x 3.50, GR8
05	2.00	EA	LN-0750NC-NL-GR8		LOCKNUT, 3/4-10UNC, NYLOCK, GR8
06	1.00	EA	LN-1000NC-NL-GR8		LOCKNUT, 1-8UNC, NYLOCK, GR8
07	1.00	EA	HH-1000NC-0400-GR8		CAPSCR, HEX HD, 1-8UNC x 4.00, GR8
08	2.00	EA	HH-0500NC-0100-GR8		CAPSCR, HEX HD, 1/2-13UNC x 1.00, GR8
09	2.00	EA	FW-0500-A		WASHER, F, 1/2, PLAIN, TYPE A



* NOTE: SKATE ILLUSTRATED FOR ASSEMBLY PURPOSES ONLY

REV.	DESCRIPTION	DATE
00	RFM	4/21/2009

© 2009 CANRIG DRILLING TECHNOLOGY CANADA LIMITED
ALL RIGHTS RESERVED

THE DRAWINGS, INFORMATION AND SUBJECT MATTER HEREOF ARE THE CONFIDENTIAL, SOLE AND EXCLUSIVE PROPERTY OF CANRIG DRILLING TECHNOLOGY CANADA LTD. AND ARE NOT TO BE COPIED, REPRODUCED, OR USED IN ANY MANNER FOR ANY PURPOSE WHATSOEVER WITHOUT WRITTEN CONSENT OR DIRECTION.



7475 51 Street SE
Calgary, Alberta, Canada, T2C 4L6
Website: www.canrig.com
Bus. (403) 237-6400 Fax. (403) 233-2967

TITLE:
ASSEM, 16-3/4IN SKATE CAGE

DRAWN BY:	DATE:	DRAWING NO:	SHEET:	REV:
BK	4/21/2009	121300074	1 OF 1	00

INFORMATION:
For further
information contact:

For a complete list of all bulletins go to www.canrig.com

Field Service
Canrig Drilling Technology Ltd.
14703 FM 1488
Magnolia, Texas 77354
Phone: 281.259.8887
Fax: 281.259.8158

7475 51 Street SE
Calgary, AB T2C 4L6
Phone: 403.237.6400
Fax: 403.536.4605

This page intentionally left blank