



Model: See Affected Units  
Serial #: N/A

Aug. 7, 2024

Product Bulletin # PC-057 Rev 1

## Power Catwalk Carrier Beckhoff J-Box Issue

### Issue

Canrig was notified of an incident in which the Carrier's Beckhoff Input/Output junction box broke off the mounting brackets and got caught between the carrier and the skid, destroying the box and its components.

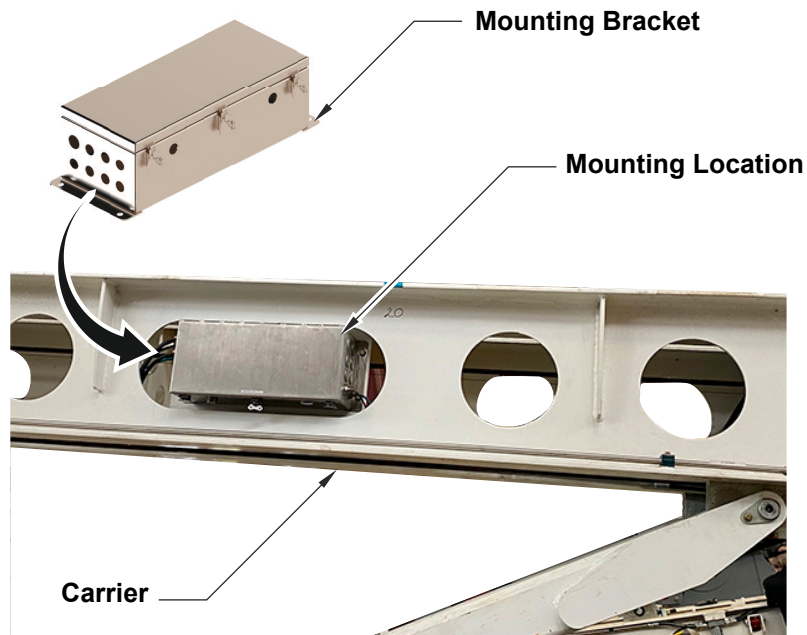


Figure 1: J-Box with mounting brackets



Figure 2: J-Box mounting welds failed and the J-box got crushed between the Carrier and Catwalk base



Model: See Affected Units

Serial #: N/A

Aug. 7, 2024

## Affected Units

All PC3000 and PC4000 Catwalks with Beckhoff Remote I/O J-box installed in the carrier.

## Recommended Actions

Inspect the existing J-boxes. The welds between the mounting brackets and the box need to be examined closely.

If an insufficient weld (less than 3/4" weld) or a small crack is observed in that area, please do the following.

1. Remove the box and contact a Canrig representative to repair it. Follow drawing DT24905 and the Canrig welding specification ENG 704, see Figure 4 on page 3 as a reference.
2. If reworking the box is not feasible, please contact a Canrig representative for a replacement.

**Welds developing cracks**

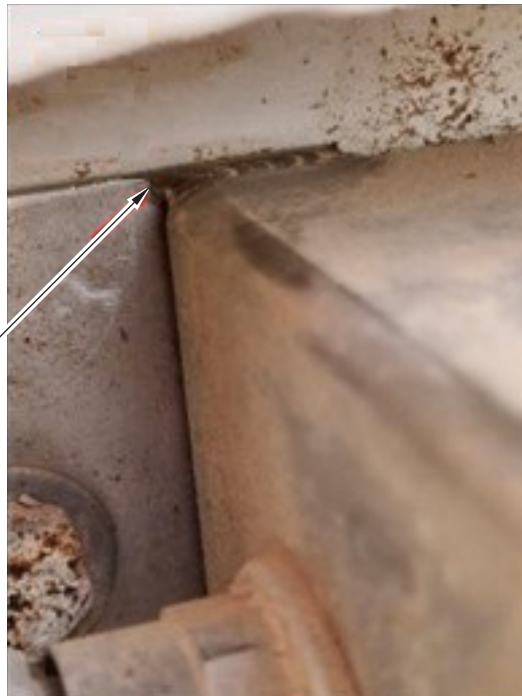
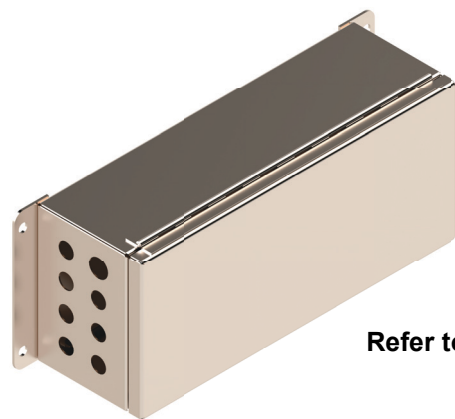
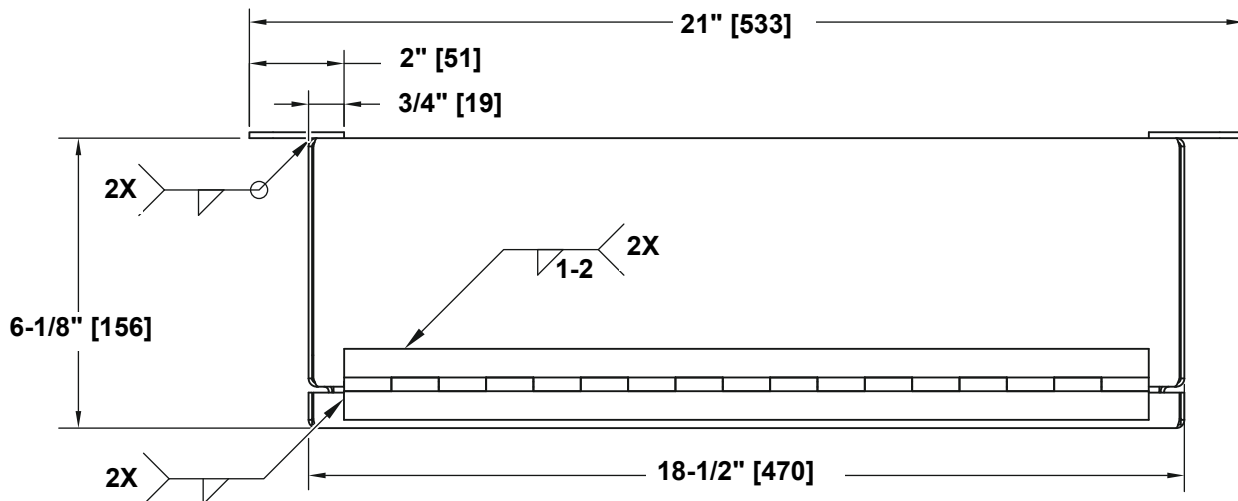


Figure 3: J-box location of crack welds

## Permanent Solution

Drawing updated with the proper weld call out.

**NOTICE** Build to NEMA 4X/UL50 Standards.



Refer to drawing DT24905

Figure 4: J-Box weld call out updated



Model: See Affected Units Serial #: N/A	Aug. 7, 2024
--	--------------

This page is intentionally left blank.