

# Safety Bulletin

**SB No: 025**

**Rev: A**

**Date: April 24, 2006**

**Description:** Engagement Marking of Casing  
Casing Drive System™ Operating Procedure



**TESCO**

Tesco Corporation  
6204 – 6A Street SE  
Calgary, Alberta T2H 2B7  
Phone: (403) 692 5700  
[www.tescocorp.com](http://www.tescocorp.com)

## BACKGROUND INFORMATION

The External Casing Drive System™ (CDS™) may not properly grip a casing joint if the engagement (swallow) between the External CDS™ and the casing is insufficient, resulting in the dies closing on the coupling instead of the casing. This can occur due to an operational error and may result in casing being dropped.

To operate effectively and safely it is critical that the External CDS™ is engaged to a proper depth. This ensures that the casing coupling will not interfere with the operation of the tool. As published in the CDS™ Operation Procedures – Operations Guide, document number 883003 – pages 18 and 19, a procedure is documented for marking the casing to help verify sufficient engagement. The information contained in this Bulletin takes precedence over current Manual instructions regarding application of “Paint Marks”. Corrective action for clarifying marking procedures in the manual is required, see below.

## AFFECTED PRODUCT:

This Bulletin applies to the Tesco External CDS™ (Reference P/N's 720632 & 720635).

## CORRECTIVE ACTION REQUIRED:

I. The casing marking procedure shall be discussed during the Job Safety Analysis (JSA) before the job begins and with every shift/crew change until the job is completed.

At a minimum the following items are to be discussed and acted upon:

1. Establish the component to be used as the reference point to the casing (the underside of the single joint casing elevator or the bottom of the CDS™ as discussed below). See Figure 1.
2. Ensure the “Reference Mark” length (the calculation in Figure 1) has been recorded and verified.
3. Re-verify the “Reference Mark” on the casing. (Sample auditing done at appropriate intervals.)
4. Use a reliable and repeatable method to place the “Reference Mark” at the correct distance on the casing. The use of fixed length rods for each potential length is recommended. The use of tape measures or a rod with multi-increments can lead to errors during application and is not recommended.
5. For marking the casing, use a highly reflective and/or fluorescent paint.
6. Use additional lighting as required for nighttime operation or poor visibility conditions.
7. Ensure pre-existing marks on the casing do not create confusion. If other marks exist, place a vertical mark touching the “Reference Mark” to eliminate confusion.
8. It is recommended that the bottom of the Single Joint Elevator be used for the reference marking. However, if it is necessary that the bottom of the CDS™ (41 inch “Reference Mark”) be used, a mast camera system is strongly recommended.

**IMPORTANT:** *This “Reference Mark” length is a cumulative distance based on the tool engagement length (current model: 41 inches) plus the distance from the bottom of the External CDS™ body to the reference component. If you are using the link tilt system and either manual or remote operated single joint pick-up elevators, remember that if the length of the elevator links changes the casing mark length will change. This is especially important if you are using adjustable links.*

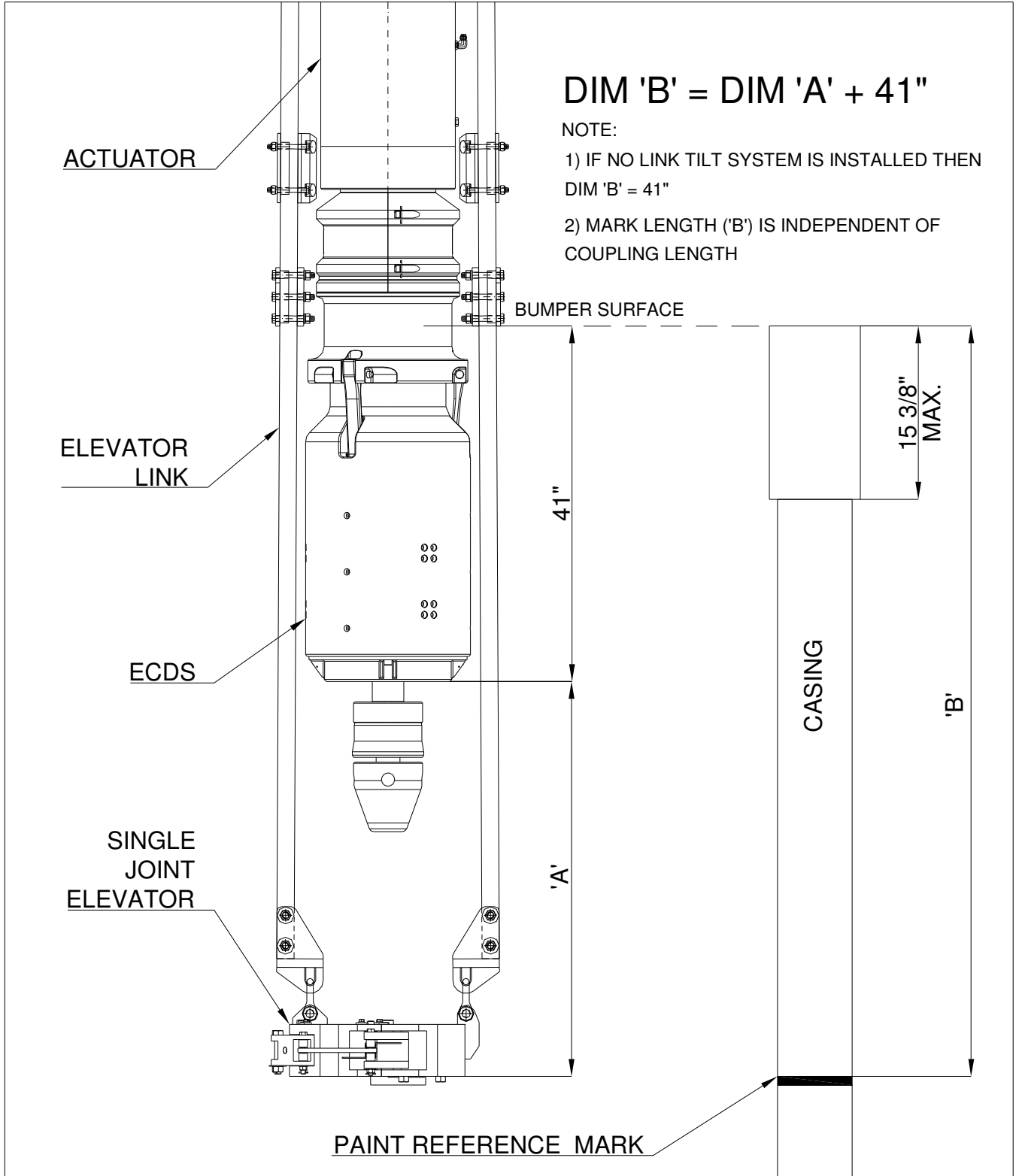
**CAUTION:** *The maximum coupling length and/or external upset length that can be used with the External CDS™ is 15-3/8”.*

II. All JSA Forms, Tesco Operation Manuals and Training Materials are to be amended to include these instructions.

---

Please contact Tesco Corporation at the following email address on issues specific to this bulletin.

[Safety Technical Bulletins@TescoCorp.com](mailto:Safety_Technical_Bulletins@TescoCorp.com)



**Figure 1**