

## Technical Bulletin

No: TB052

Rev: 0

Date: 13 May, 2008

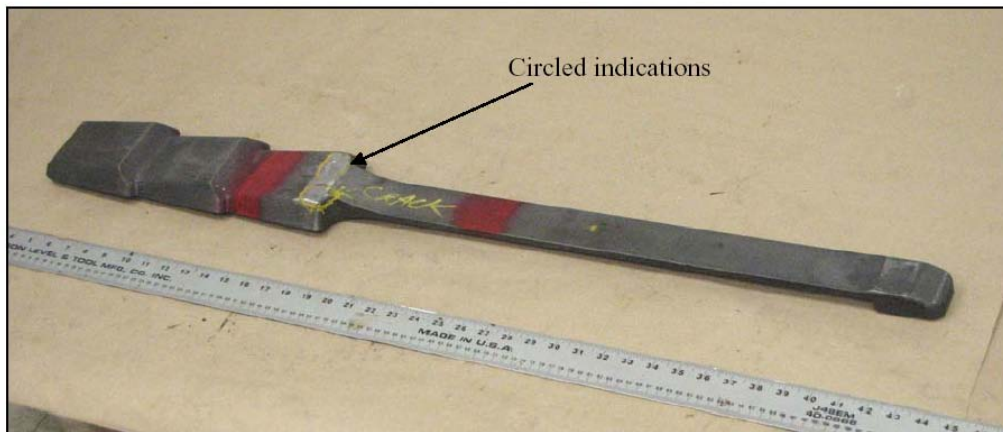
### Description: Importance of Internal CDS™ Grapple Inspection



Tesco Corporation  
6204 – 6A Street SE  
Calgary, AB. T2H 2B7  
Phone: (403) 692 5700  
[www.tescocorp.com](http://www.tescocorp.com)

#### BACKGROUND INFORMATION:

As part of a routine inspection, a 9-5/8" grapple (part #15407, 32.3 – 40 lbs/ft, serial #01785-1-80183102-38) failed a MPI test as indications were found on the flat behind the grapple teeth (see photograph below for clarification). Upon further inspection, it was determined that the grapple was not cracked, but rather the MPI picked up slag inclusions in an unapproved weld repair.



#### AFFECTED PRODUCT:

All internal CDS™ grapples.

#### ACTION REQUIRED:

This incident reinforces the need to follow the CDS™ maintenance guide. As per the CDS™ maintenance guide, grapples are to be MPI'd every 60 operating days. Any flaws or indications found to be similar to the indications described in this bulletin should be forwarded to the TESCO Manufacturing QC department ([QCsupport@tescocorp.com](mailto:QCsupport@tescocorp.com)) for further investigation. Measures to replace non conforming product are the responsibility of the owner, but TESCO Manufacturing will assist where possible.

---

**Contact your local TESCO Parts and Service Center for further information regarding this bulletin and or supply of affected components noted above.**