

Change Bulletin

No: CB006

Rev: 1

Date: Jan. 2, 2006



Tesco Corporation
6204 – 6A Street SE
Calgary, AB. T2H 2B7
Phone: (403) 692 5700
www.tescocorp.com

TESCO

Description: EMI Quill Spline Lock Collar

BACKGROUND INFORMATION:

The quill spline lock collar (Tesco P/N 11315) that is used on the EMI 400 and EMI 450 series of top drives was manufactured with a tight spline fit. To improve the ease of installation, the spline dimensions have been modified to include a 0.020 inch oversize on diameter to provide a looser fit. The groove that separates the two splined sections has also been increased in width to improve manufacturability. These modifications are documented in Engineering Change Notification 084-0012. Figure 1 below shows the updated dimensions for the quill spline lock collar; please refer to drawing 30001101 rev. 3 for complete specifications.

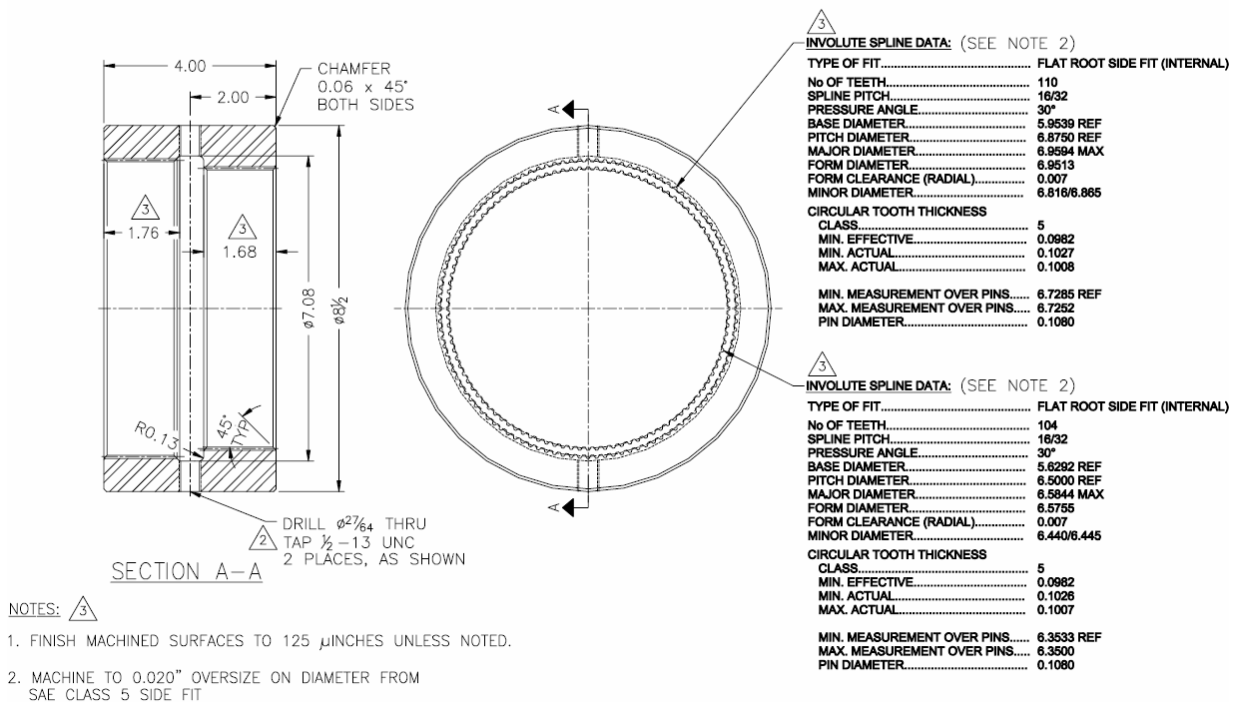


Figure 1 – Revised Lock Collar Dimensions

AFFECTED PRODUCT:

The affected products include all of the 150T and 250T EMI 400 top drives and the EMI 450 series of top drives that were manufactured before approximately December 18, 2006.

ACTION REQUIRED:

If a situation is encountered where a quill spline lock collar can not be lowered into place on the mud saver valve complete the following,

1. Inspect the lock collar splines for burrs, dents and other minor damage and repair if required.
2. Inspect the quill splines for burrs, dents and other minor damage and repair if required.
3. Inspect the mud saver splines for burrs, dents and other minor damage and repair if required.
4. Measure the OD of the mud saver splines at several locations to check for out of round condition, the specified OD for the mud saver splines is 6.937 ± 0.001 inches.

If the checks above do not reveal any problems then the spline lock collar should be replaced with one of current manufacture. Alternately, the existing collar may be reworked to the dimensions shown in Figure 1 (ref. drawing 30001101 rev. 3), if required.

Contact your local TESCO Parts and Service Center for further information regarding this bulletin and or supply of affected components noted above.