

# Change Bulletin

No: CB024

Rev: 0

Date: 7 Feb 2008

Description: Revised Torque Track Hanging Slings and Torque Track Hanging Lugs



Tesco Corporation  
6204 – 6A Street SE  
Calgary, AB. T2H 2B7  
Phone: (403) 692 5700  
[www.tescocorp.com](http://www.tescocorp.com)

## BACKGROUND INFORMATION:

It had been observed that some torque track hanging slings and torque track hanging pad eyes had no load rating. A project was undertaken to develop an analytical method to determine the required load rating under maximum drilling conditions, and to design torque track hanging slings and torque track hanging lugs that meet the analytically determined requirements.

One new torque track hanging sling (TESCO p/n 1340024, SWL 22.6 Ton) had been designed for all 12" x 8" torque track installations. The new torque track hanging sling may be extended by a maximum of 21" but has no provision to interface with any existing 12" x 8" top torque track.

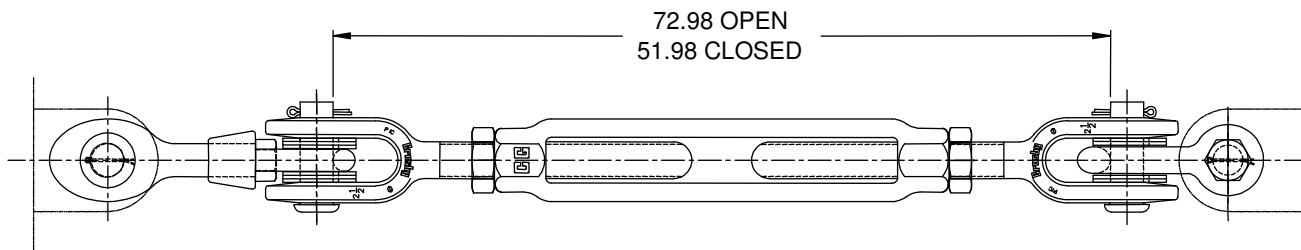


Figure 1 New Torque Track Hanging Sling, SWL 22.6 Ton, TESCO p/n 1340024

A new 8' adjustable torque track hanger, TESCO p/n 1340104, was developed to interface with the new torque track hanging sling. The adjustable torque track hanger is assembled into the top torque track segment in both bolted flange and dual-pin 12" x 8" torque track kits. TESCO p/n 1340105 is the new bolted flange 12" x 8" torque track kit, and TESCO p/n 970190 is the new dual-pin 12" x 8" torque track kit.

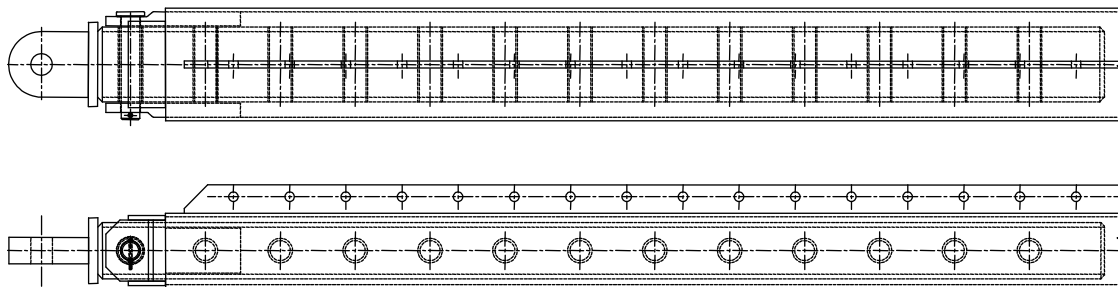


Figure 2 Torque Track Hanger, 8' Adjustable, TESCO p/n 1340104

The bolted flange 12" x 8" torque track kit (TESCO p/n 5791) and dual-pin 12" x 8" torque track kit (TESCO p/n 720646) have both been discontinued because neither kit includes a top torque track segment that can interface with the new torque track hanging sling.

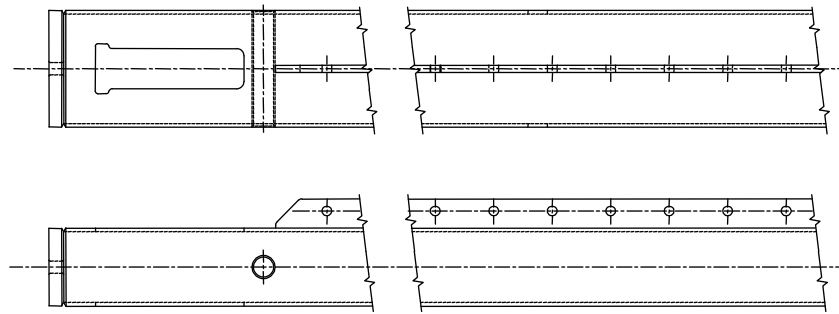


Figure 3 Cable Clamp-Style Top Torque Track, TESCO p/n 3907 (obsolete)

Another new torque track hanging sling (TESCO p/n 1340027, SWL 12 Ton) has been designed for all 12" x 4" HMI torque track installations. A new 12" x 4" torque track hang-off plate (TESCO p/n 1340026) has been designed to permit 12" x 4" torque track installations to be installed with the new torque track hanging sling.

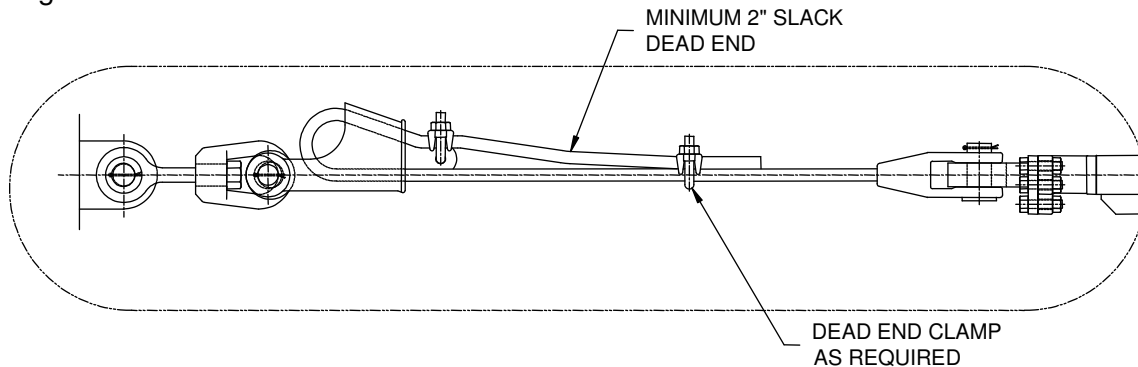


Figure 4 New 12" x 4" HMI Torque Track Hanging Sling, SWL 12 Ton, TESCO p/n 1340027

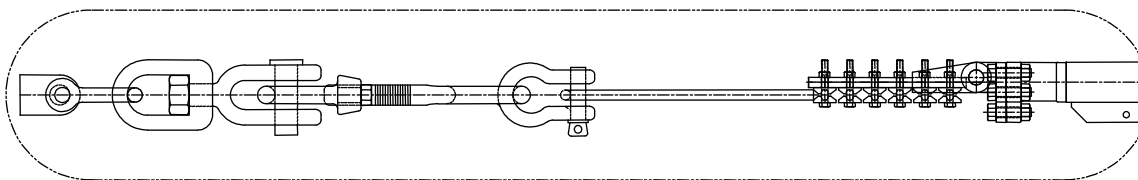


Figure 5 Old 12" x 4" HMI Torque Track Hanging Sling, TESCO p/n 4537 (obsolete)

Two new torque track hanging lugs have been designed (TESCO p/n 1340077, SWL 18 Ton; and TESCO p/n 1340023, SWL 23 Ton). Either lug may be used for either torque track hanging sling. In general, the 18 Ton torque track hanging lug TESCO p/n 1340077 will be used for all top drive installations, except for the ECI/S-1350 top drive which will require the 23 Ton torque track hanging lug TESCO p/n 1340023.

The change is fully documented in ECNs 134-0012 and 097-0087.

**AFFECTED PRODUCT:**

These changes affect every rig-up kit manufactured for TESCO.

**ACTION REQUIRED:**

TESCO recommends that the new torque track hanging slings and torque track hanging lugs be used in preference to the old torque track hanging slings and torque track hanging pad eyes; but TESCO does not require that use of the old torque track hanging slings and torque track hanging pad eyes must be discontinued. The old torque track hanging slings and torque track hanging pad eyes had been used successfully for more than 10 years and for hundreds of top drives and thousands of installations with no known failure, but since they do not meet the newly adopted design criteria TESCO has taken the step of replacing the designs.

---

**Contact your local TESCO Parts and Service Center for further information regarding this bulletin and or supply of affected components noted above.**