

# Safety Bulletin

No: SB017    Rev: 1    Date: 22 December 2011

## Elevator Horn Catch Hazard



**TESCO**

Tesco Corporation  
5616 – 80th Avenue SE  
Calgary, Alberta, Canada T2C 4N5  
Tel: 1-877-TESCO-77 (North America)  
Tel: 1 (713) 359-7195 (AMSS 24-hour support)  
Tel: 1 (713) 359-7295 (International)  
Email: [bulletins@tescocorp.com](mailto:bulletins@tescocorp.com)  
[www.tescocorp.com](http://www.tescocorp.com)  
[www.tescoparts.com](http://www.tescoparts.com)

### BACKGROUND INFORMATION:

There has been a reported incident where, as the result of an error in top drive operation, the elevator horn(s) became caught in the torque track connector flange cavity. This can cause the lower end of the tubular held by the elevator to move with uncontrolled and unpredictable motion.

This presents an equipment and personnel injury hazard when **all** of the following listed conditions exist.

1. Hoisting or lowering with tubulars latched in elevators and
2. Elevators are reversed having the elevator horns facing the torque track and
3. Elevator links are tilted toward the torque track.

See Figure 1 to illustrate this condition.

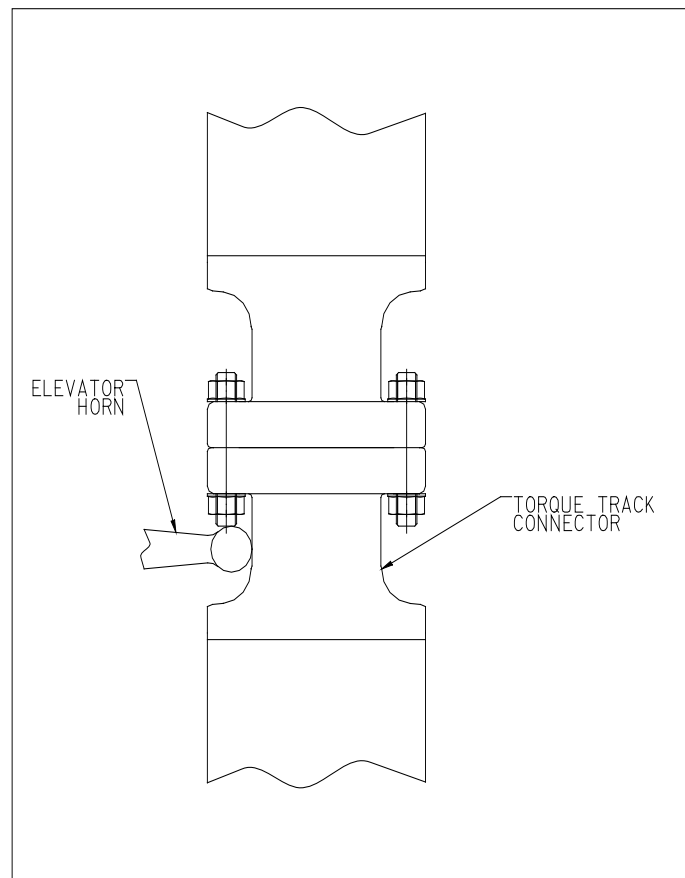


Figure 1

## **ACTION REQUIRED:**

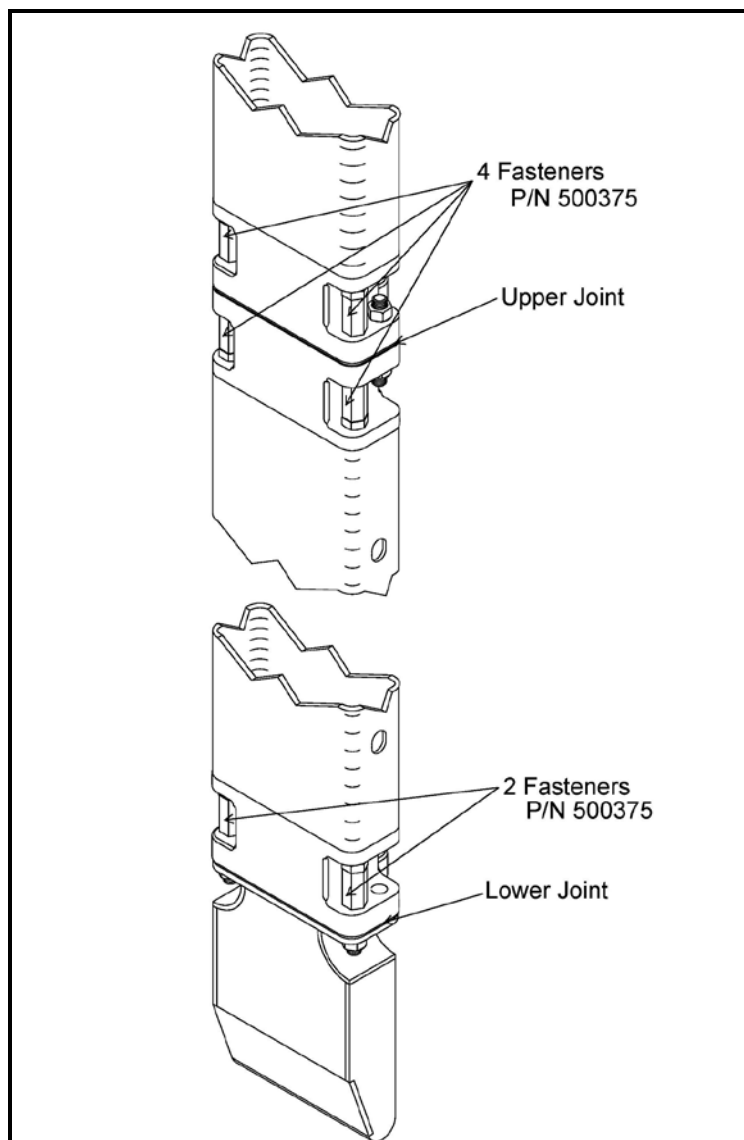
If there is the potential of operating a TESCO Top Drive System in the method indicated in the Listed Conditions, the appropriate TESCO engineered "Action Required" for the size of torque track shall be implemented.

### **Torque Track Types Affected**

All TESCO Top Drive Systems with bolted torque track connector flanges have the potential to be affected by this bulletin.

### **Action Required for 4" x 12" Torque Track (HMI Model Only)**

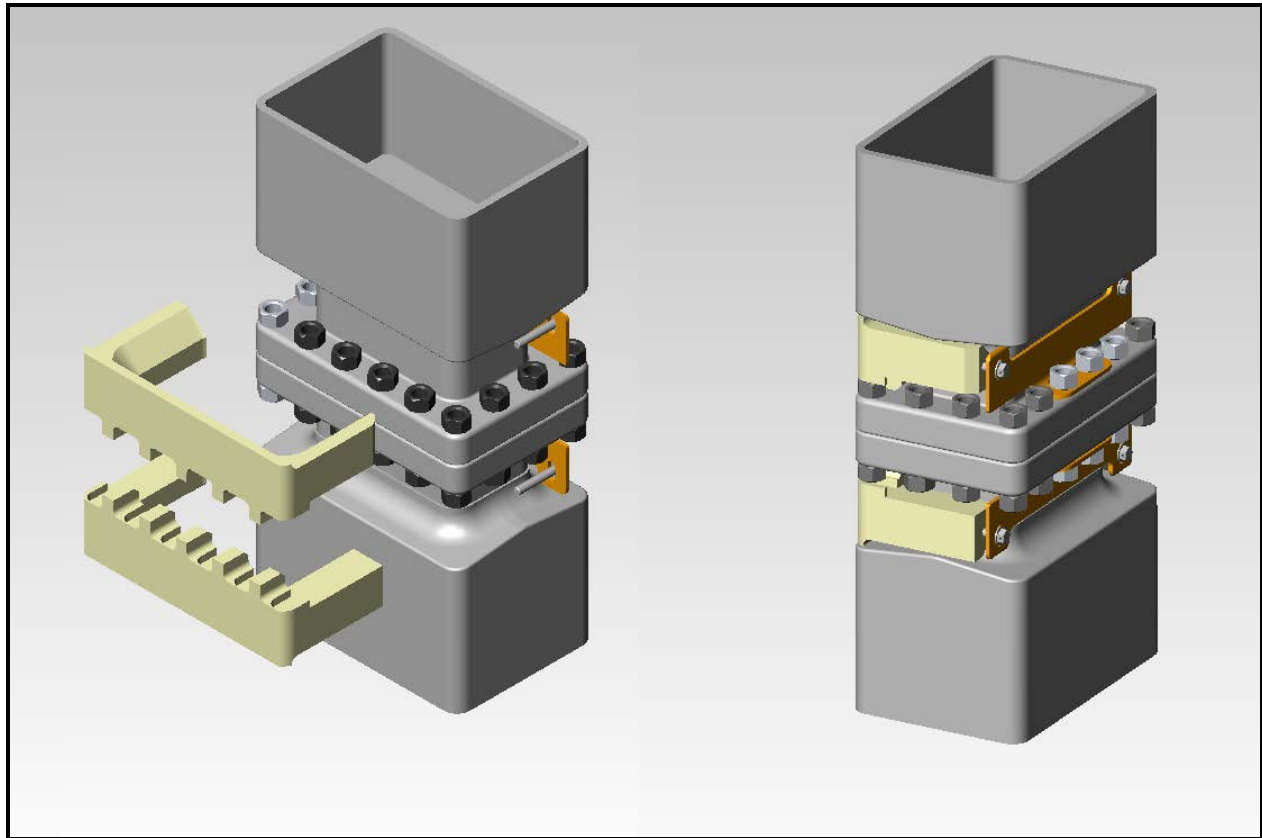
Replace the existing forward facing nuts, at vulnerable flange connection locations, with fasteners P/N 500375 (qty. 4 and 2 for upper and lower joints respectively). This will prevent the elevator horns from entering the torque track connector cavity. Ensure that the nuts are torqued with the flats facing forward. See Figure 2 for a typical configuration.



**Figure 2:** Torque track nuts (fasteners) in a typical installation

**Action Required for 8" x 12" Torque Track (All Other Models)**

Obtain and install Insert Kit(s) P/N 720524-1 (qty. 1 per joint) at vulnerable flanged connector locations to prevent the elevator horns from entering the torque track connector cavity. See Figure 3 for a typical configuration.



**Figure 3:** Torque track, guard installation (well side) and guard latched (mast side)

**Implementation**

The implementation of the above safety concerns for the torque track 4" x 12" (HMI model only) and 8" x 12" (all other models) has been addressed and initiated in the Engineering Change Notice (ECN). For reference purposes, consult ECN-181-0036.

Version	Date (D/M/Y)	ECN	Description of changes
Rev 0	22/12/2011	181-0036	Initial release of document

Copyright © 2011 Tesco Corporation. TESCO® is a registered trademark in the United States and Canada. TESCO CASING DRILLING® is a registered mark in the United States. CASING DRILLING® is a registered mark in Canada and CASING DRILLING™ is a trademark in the United States. Casing Drive System™, CDS™, Multiple Control Line Running System™ and MCLRS™ are trademarks in the United States.