

Technical Bulletin

No: TB046

Rev: 0

Date: 31 Oct 2007

Description: Revise EMI / HXI Load Collar To Permit Full Freedom of Movement

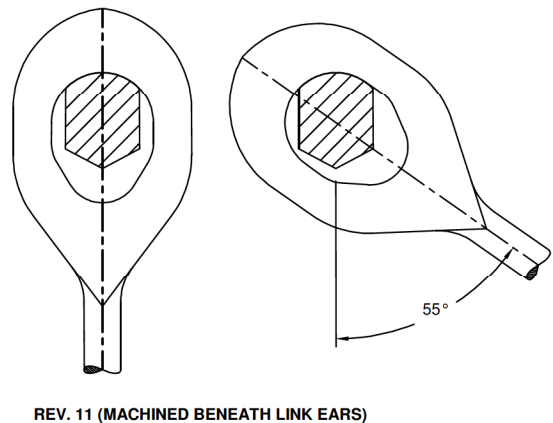
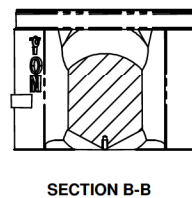
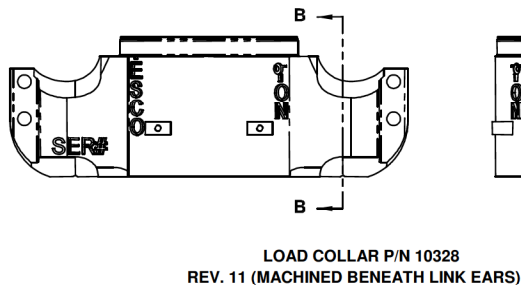
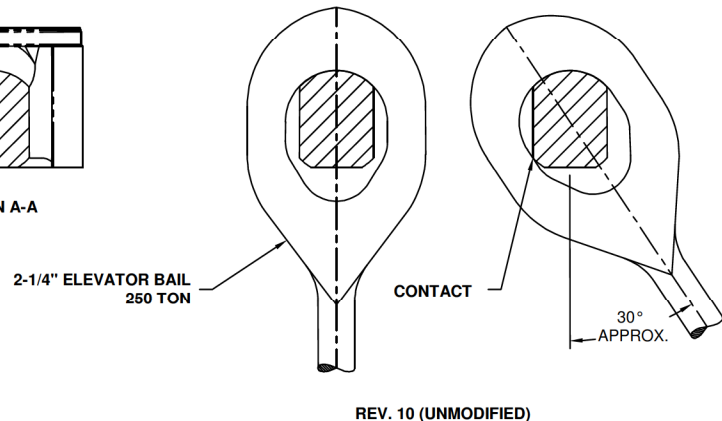
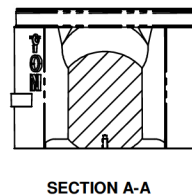
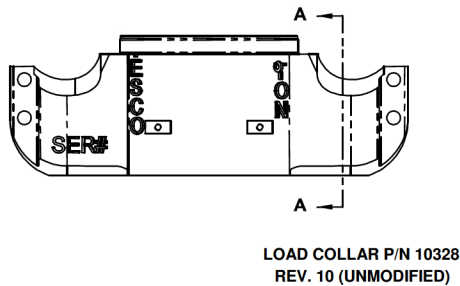


Tesco Corporation
6204 – 6A Street SE
Calgary, AB. T2H 2B7
Phone: (403) 692 5700
www.tescocorp.com

BACKGROUND INFORMATION:

It had been observed in the field that some 250 Ton load collars for TESCO EMI and HXI top drives did not permit the full freedom of movement for the elevator link tilt. Investigation revealed that the cause of the interference was an excess of material beneath the load collar link ears. The correction was to machine away the excess material beneath the load collar link ears; however that created the secondary condition that it was possible for the link tilt cylinders to lift the elevator links until they impacted into the elevator link retainers. Therefore the elevator link retainers were also modified with additional clearance so as to eliminate the possibility of the elevator links ever impacting into the elevator link retainers.

This change is documented fully in ECN-141-0062.



AFFECTED PRODUCT:

This change affects the 250 Ton load collar (TESCO p/n 10328) and the elevator link retainer (TESCO p/n 13169) as used in the TESCO EMI-400, EMI-450, and HXI-700 Top Drive pipe handler kits (TESCO p/n 730691, p/n 13437, and p/n 1100006, respectively) wherein the load collar had been manufactured after 7 February 2006 and before 28 August 2007.

ACTION REQUIRED:

If a customer raises a concern that the link tilt is binding on the load collar, confirm by testing the prescribed range of motion of the elevator links (up to 35° forward and up to 55° backward). If there is any interference that causes binding, perform the following remedial procedure. Perform the machining operation as documented in the latest version of the drawing for the load collar, TESCO p/n 10328; repeat the proof load testing of the corrected load collar; supply the latest version of the elevator link retainers, TESCO p/n 13169; re-install the load collar back onto the Top Drive; and test and confirm that the binding issue is now resolved.



Contact your local TESCO Parts and Service Center for further information regarding this bulletin and or supply of affected components noted above.